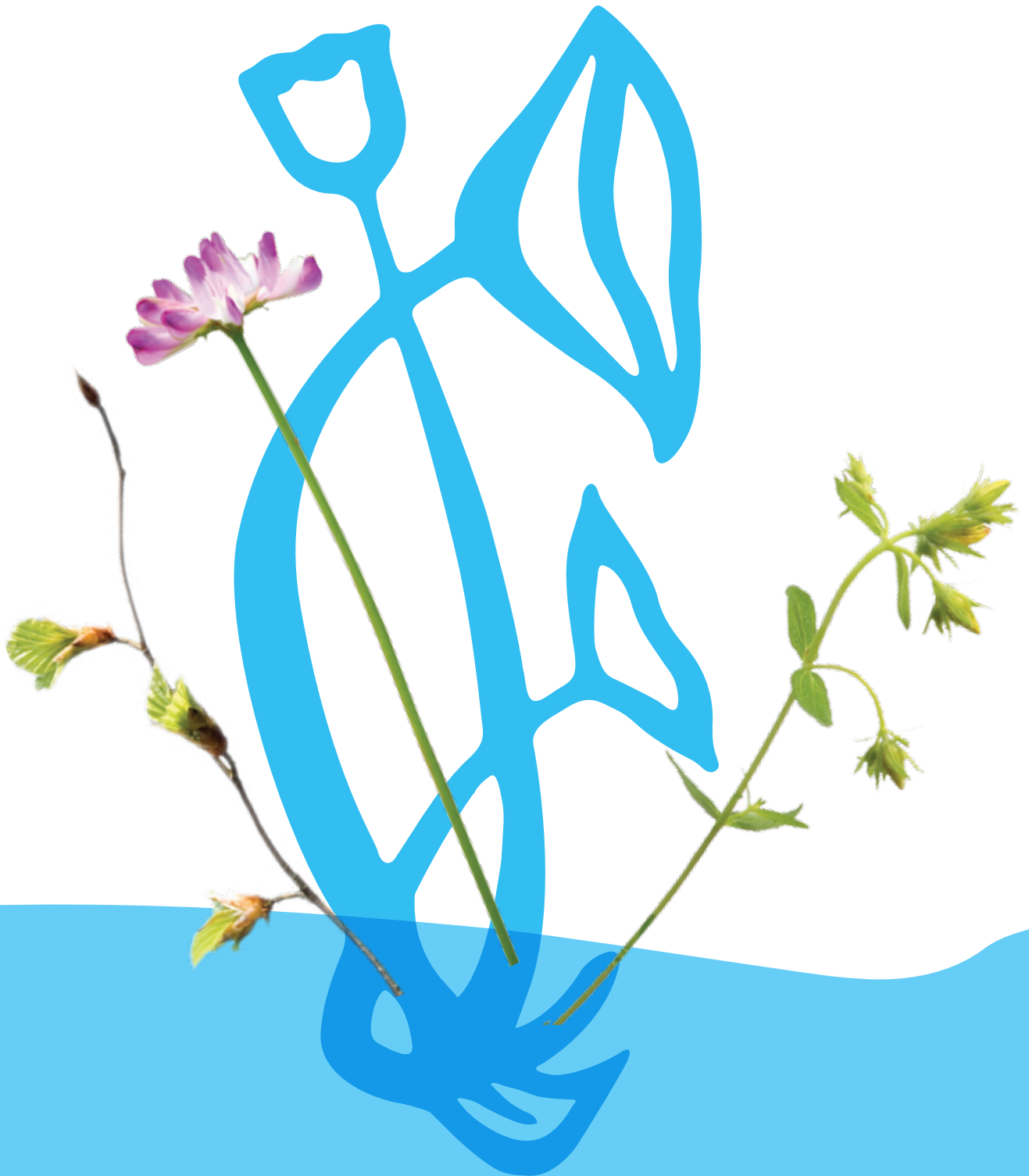


# UNDA Pediatric Homeopathic Preparations





## Angiplex

### HOMEOPATHIC PREPARATION

For the temporary relief of symptoms associated with sore throat and laryngitis†

#### FORMULA

**Each Tablet Contains Equal Parts of:**

<i>Aconitum napellus</i> (Aconite) Whole Plant	8X
<i>Apis mellifica</i> (Honeybee)	8X
<i>Arum triphyllum</i> (Indian turnip) Underground Parts	4X
<i>Belladonna</i> (Deadly nightshade) Whole Plant ( $< 1.25 \times 10^{-10}$ % alkaloids, calculated)	8X
<i>Kalium bichromicum</i> (Potassium bichromate)	10X
<i>Lachesis mutus</i> (Bushmaster) Venom	10X
<i>Mercurius solubilis</i> (Hahnemann's soluble mercury)	10X
<i>Phytolacca decandra</i> (Pokeweed) Root	8X

Other ingredients: Xylitol, carmellose sodium, lactose monohydrate, magnesium stearate

#### Recommended Dose

**Adults and adolescents (12 years and older):** At the first sign of symptoms, dissolve one tablet under the tongue every half hour to one hour. When symptoms subside, decrease frequency to every four hours. Once the symptoms are gone, continue taking one tablet daily for three more days. **Children (under 12 years):** Take under the direction of your healthcare practitioner.

#### Size

30 Tablets

NDC 62106-1229-3

## Drosera Plex Cough Syrup

### HOMEOPATHIC PREPARATION

For the relief of all types of coughs†

#### FORMULA

**Each Teaspoon Contains:**

<i>Adiantum capillus-veneris</i> (Maidenhair) Leaf	MT
<i>Drosera</i> (Sundew) Whole plant	MT
<i>Hyoscyamus niger</i> (Henbane) Whole plant	8X
<i>Hyssopus officinalis</i> (Hyssop) Aerial Parts	MT
<i>Ipecacuanha</i> (Ipecac) Underground parts	3X
<i>Lachesis mutus</i> (Bushmaster) Venom	8X
<i>Origanum vulgare</i> (Wild marjoram) Aerial parts	4D
<i>Papaver rhoeas</i> (Corn poppy) Flower	2X
<i>Pulsatilla</i> (Wind flower) Whole plant	6X
<i>Rumex crispus</i> (Curly dock) Underground parts	8X
<i>Spongia tosta</i> (Roasted sponge)	8X
<i>Sulphur</i> (Sublimed sulfur)	6X

Other ingredients: Grape skin extract, caramel, ethanol, purified water, sucrose

#### Recommended Dose

**Adults and adolescents (12 years and older):** Take 1 tablespoon (15 ml) three to five times daily, or as recommended by your healthcare practitioner. **Children (under 12 years):** Take under the direction of your healthcare practitioner.

#### Size

6.1 fl oz (180 ml)

NDC 62106-1181-0

## Echinasyr

### HOMEOPATHIC REMEDY

Supports a healthy immune system and helps to maintain natural resistance and defenses†

#### DRUG FACTS

**Active ingredient**

<i>Echinacea purpurea</i> (Purple cone-flower) Aerial Parts	MT
---	----

Inactive ingredients: Sorbitol, glycerin, purified water, *Rubus idaeus*, *Ribes nigrum*, grape skin extract, benzoic acid, ammonium glycyrrhizinate, citric acid

#### Recommended Dose

**Adults and Adolescents (12 years and older):** Take one to two teaspoons every four to six hours or as recommended by your healthcare practitioner. **Children (under 12 years):** Take under the direction of your healthcare practitioner.

#### Size

4.2 fl oz (125 ml)

NDC 62106-1183-2

## Muco Coccinum

### NOSODE PREPARATION

For the temporary relief of symptoms associated with colds and flu†

#### FORMULA

**Each Tablet Contains:**

<i>Branhamella catarrhalis</i>	200 K
<i>Influenzinum</i> (Influenza vaccine)	200 K
<i>Klebsiella pneumoniae</i> K2	200 K
<i>Micrococcus tetragenes</i>	200 K

Other ingredients: Carboxymethylcellulose sodium, lactose monohydrate, magnesium stearate, xylitol

#### Recommended Dose

**Adults and adolescents (12 years and older):** At the first sign of symptoms, take one tablet allowing it to dissolve under the tongue. If symptoms persist, take one tablet two or three times during the day. If symptoms continue to persist after three days, discontinue use and seek advice from a healthcare practitioner. **Children (under 12 years):** Take under the direction of your healthcare practitioner.

#### Size

10 Tablets

NDC 62106-6870-0

## Unda #5

### FORMULA

**Each Drop Contains:**

<i>Adiantum capillus-veneris</i> (Maidenhair) Leaf	4X
<i>Argentum metallicum</i> (Silver)	12X
<i>Cuprum metallicum</i> (Copper)	12X
<i>Drosera</i> (Sundew) Whole Plant	4X
<i>Glycyrrhiza glabra</i> (Licorice) Root	4X
<i>Grindelia</i> Aerial Parts	4X
<i>Inula helenium</i> (Elecampane) Root	4X
<i>Tormentilla</i> (Bloodwort) Rhizome	4X
<i>Tussilago farfara</i> (Coltsfoot) Whole Plant	4X

Inactive ingredients: Ethanol (beet), purified water

### Recommended Dose

**Adults and adolescents (12 years and older):** Take 5 drops three times daily or as recommended by your healthcare practitioner. **Children (under 12 years):** Take under the direction of your healthcare practitioner.

### Size

0.7 fl oz (20 ml)

NDC 62106-1187-8

## Unda #312

### FORMULA

**Each Drop Contains:**

<i>Angelica archangelica</i> (European angelica) Root	6X
<i>Drosera</i> (Sundew) Whole Plant	7X
<i>Grindelia</i> Aerial Parts	6X
<i>Lamium album</i> (Dead nettle) Whole Plant	6X
<i>Pinus sylvestris</i> (Scotch pine) Shoot	6X
<i>Rubus fruticosus</i> (Shrubby blackberry) Leaf	6X
<i>Senega officinalis</i> (Seneca snakeroot) Root	6X

Inactive ingredients: Ethanol (beet), purified water

### Recommended Dose

**Adults and adolescents (12 years and older):** Take 5 drops three times daily or as recommended by your healthcare practitioner. **Children (under 12 years):** Take under the direction of your healthcare practitioner.

### Size

0.7 fl oz (20 ml)

NDC 62106-1189-8

## Unda #27

### FORMULA

**Each Drop Contains:**

<i>Antimonium crudum</i> (Antimonous sulfide)	12X
<i>Borago officinalis</i> (Common borage) Leaf	4X
<i>Cetraria islandica</i> (Iceland moss) Whole Plant	4X
<i>Drosera</i> (Sundew) Whole Plant	4X
<i>Mentha piperita</i> Whole Plant	4X
<i>Senega officinalis</i> Root	4X

Inactive ingredients: Ethanol (beet), purified water

### Recommended Dose

**Adults and adolescents (12 years and older):** Take 5 drops three times daily or as recommended by your healthcare practitioner. **Children (under 12 years):** Take under the direction of your healthcare practitioner.

### Size

0.7 fl oz (20 ml)

NDC 62106-1126-8

GAMMADYN OLIGO-ELEMENTS

# Gammadyn Cu Copper

OLIGO-ELEMENT SUPPLEMENT

## SUPPLEMENT FACTS

Serving Size 1 Ampoule (0.07 fl oz)  
Servings per Container 30

Each Ampoule Contains		%DV† for adults and children 4 years and older	%DV† for children under 4 years
Copper (copper gluconate)	0.725 mg	36%	73%

† Daily Value (DV)

Other ingredients: Purified water, glucose

## Recommended Dose

**Adults (19 years and older):** Take one ampoule every three hours up to 8 times per day for 3-5 days, or as recommended by your healthcare practitioner. **Children (12-18 years):** Take one ampoule one to two times daily, or as recommended by your healthcare practitioner. **Children (1-11 years):** Take ½ ampoule one to two times daily, or as recommended by your healthcare practitioner. Squeeze contents directly into mouth. Use for one to two months, or as recommended by your healthcare practitioner.

## Size

30 Ampoules

GEMMOTHERAPY MACERATES

# Ribes Nigrum

DIETARY SUPPLEMENT

## SUPPLEMENT FACTS

Serving Size 50 Drops (1.25 ml)/ Servings per Container 100

### Each Serving Contains

Black Currant ( <i>Ribes nigrum</i> ) Bud Extract (1:200)	1.25 ml *
6.25 mg Dried Equivalent	

\* Daily Value not established

Other ingredients: Glycerin, ethanol (beet), purified water

## Recommended Dose

**Adults and Children (over 12 years):** Take 50 drops (1.25 ml) three times daily in a small amount of water, or as recommended by your healthcare practitioner.

## Size

4.2 fl oz (125 ml)

SHÜESSLER SALTS

# Mélange Combination

HOMEOPATHIC PREPARATION

## FORMULA

### Each Tablet Contains:

<i>Calcarea fluorica</i> (Calcium fluoride)	12X
<i>Calcium phosphoricum</i> (Calcium phosphate)	6X
<i>Calcarea sulphurica</i> (Calcium sulfate)	6X
<i>Ferrum phosphoricum</i> (Ferrousferic phosphate)	12X
<i>Kali muriaticum</i> (Potassium chloride)	6X
<i>Kalium phosphoricum</i> (Dibasic potassium phosphate)	6X
<i>Kali sulphuricum</i> (Potassium sulfate)	6X
<i>Magnesia phosphorica</i> (Dibasic magnesium phosphate)	6X
<i>Natrum muriaticum</i> (Sodium chloride)	6X
<i>Natrum phosphoricum</i> (Sodium phosphate)	6X
<i>Natrum sulfuricum</i> (Sodium sulfate)	6X
<i>Silicea</i> (Silicon dioxide)	12X

Inactive Ingredients: Lactose monohydrate (milk), magnesium stearate, sodium carboxymethylcellulose, xylitol

## Recommended Dose

**Adults and Children (12 years and older):** Take one to four tablets, one to four times daily, or as recommended by your healthcare practitioner. **Children (under 12 years):** Take under the direction of your healthcare practitioner.

Tip bottle slightly allowing for tablets to fall into the cap. Use cap to drop tablets into mouth and allow them to dissolve under the tongue.

## Size

100 Tablets

NDC 62106-1235-2

# Seroyal

HEALING IS OUR NATURE

Seroyal is a natural pharmaceutical company, dedicated for 30 years to assisting healthcare practitioners restore, rebuild and maintain patient health. For increased patient retention, compliance and efficacy, Seroyal offers the GENESTRA BRANDS, UNDA, Pharmax and Wobenzym® product lines. To help attain better patient results, the Seroyal Continuing Medical Education program is committed to providing world-class, clinically relevant information that can be immediately integrated with existing modalities for a complete, holistic approach.



**Wobenzym®**



To order, call: **1-888-737-6925** or email: [sales@seroyal.com](mailto:sales@seroyal.com)  
For more information, visit: [www.seroyal.com](http://www.seroyal.com)